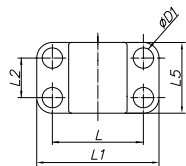
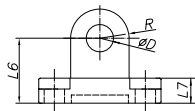


Ø 032 - Ø 200

Ucho proste CNOMO



Opis	Uszy proste
Materiał	Z - żeliwo; A - aluminium

Ø siłownika	Nr katalogowy	Wymiary [mm]								
		L	L1	L2	L5	L6	L7	R	Ø D	Ø D1
CNOMO										
032	EM/C/UPR/032/A	28	40	--	25	18	8	8	Ø 8	Ø 7
040; 050	EM/C/UPR/040/050/A	38	52	16	32	26	10	12	Ø 12	Ø 9
063; 080	EM/C/UPR/063/080/A	54	75	25	46	34	12	18	Ø 16	Ø 11
100; 125	EM/C/UPR/100/125/A	90	115	32	56	41	16	20	Ø 20	Ø 14
160; 200	EM/C/UPR/160/200/A	150	180	43	71	55	20	25	Ø 25	Ø 18